



OSWEGO CITY SCHOOL DISTRICT



**Superintendent's Report
Board of Education Meeting
10/18/22**



OSWEGO CITY SCHOOL DISTRICT

Highlight: 2022- 23 OCSD Homecoming Week

- Parade
- Buc Bowl
- Various Contests:
Volleyball, Soccer,
Swim and Football
- Color Wars
- Homecoming Dance





OSWEGO CITY SCHOOL DISTRICT

International Walk to School Day – Oct. 12

- Walk to School Day began as a simple idea – children and parents, school and local officials walking to school together on a designated day.
- It is an energizing event, reminding everyone of the simple joy of walking to school, the health benefits of regular daily activity, and the need for safe places to walk and bike.
- The event focuses on health, safety, physical activity, and concern for the environment.
- This year's event was held in collaboration with the Oswego County Traffic Safety Board and other organizations. The Oswego Police and Fire Departments, New York State Police, SUNY Oswego Police, Oswego County Sheriff's Office, Oswego County Ambulance Service, and Oswego County Health Department joined with students as they walk to school.
- Over 100 students participated in this year's event with another 20 to 30 volunteers.





OSWEGO CITY SCHOOL DISTRICT

Study Information

Last meeting:

- Labor relations information
- Real-estate information
- Current enrollment and average class sizes
- *ThoughtExchange*

Tonight:

- Corrections – historical enrollment data
- Redistricting plan
- Special permissions
- Class size information
- Repurposing ideas - information

Next Meeting:

- Community focus group outcomes report
- Building condition survey information



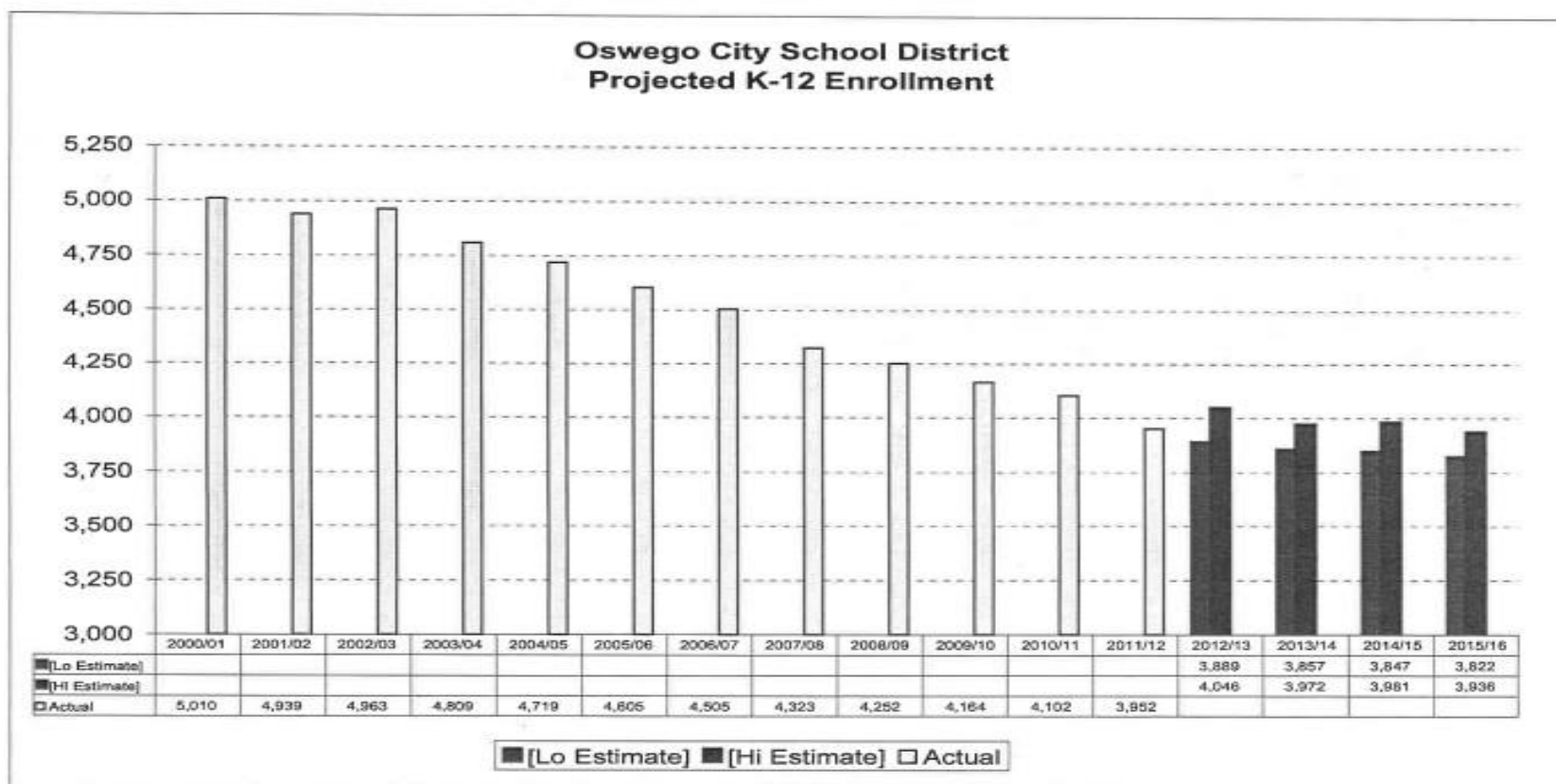
OSWEGO CITY SCHOOL DISTRICT

Corrections – Historical Enrollment Data



OSWEGO CITY SCHOOL DISTRICT

2012 Enrollment Projection from CITI BOCES Study (Correction)

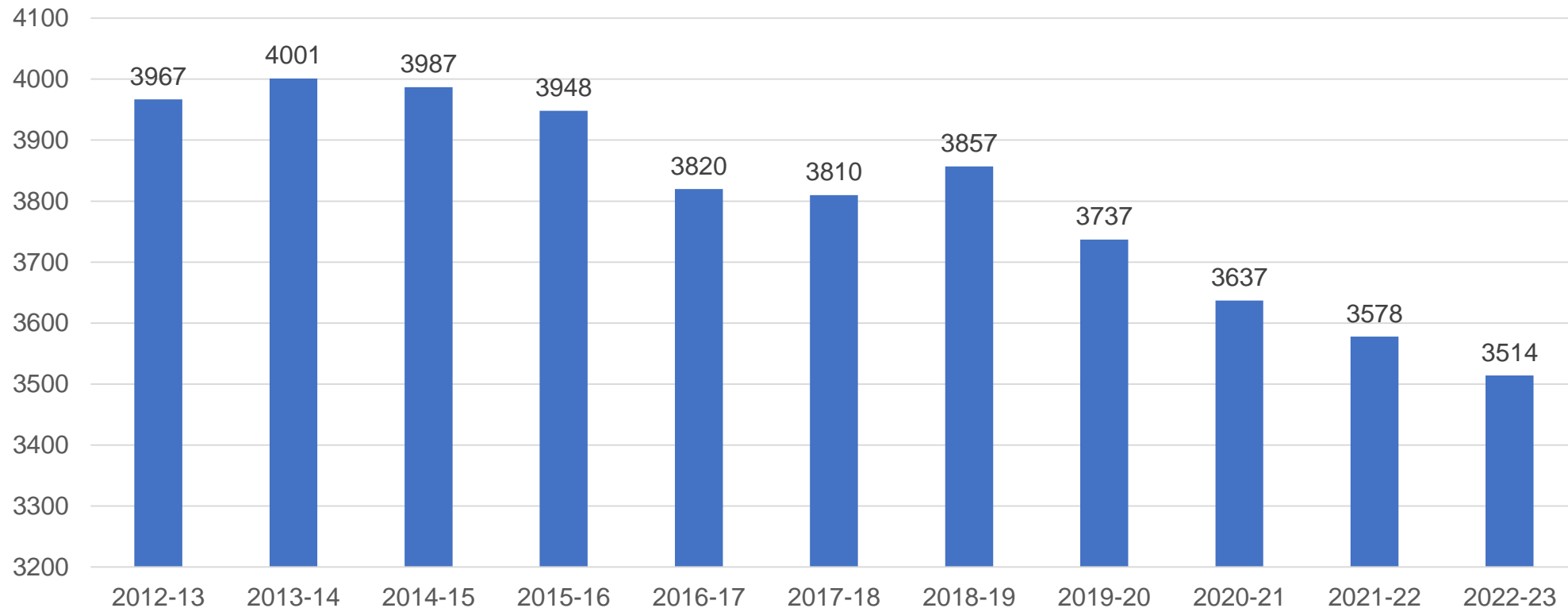


During the years of 2000-01 to 2011-12, the average yearly enrollment decline was **96** students.



OSWEGO CITY SCHOOL DISTRICT

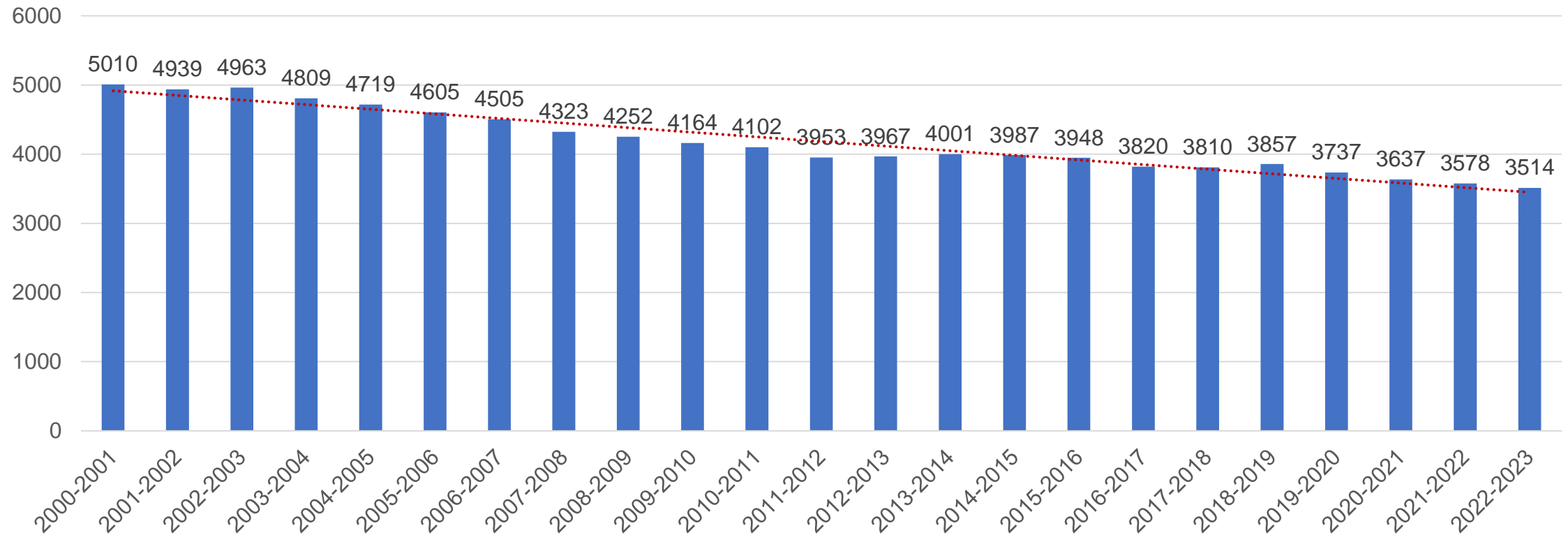
2013-2023 School Year Student K-12 Enrollment Data **(Correction)**
(Avg=**45** Student Decline per Year)
Data from BEDS Day Report





OSWEGO CITY SCHOOL DISTRICT

2001-2023 School Year Student K-12 Enrollment Data
(Avg=68 Student Decline per Year)
Data from BEDS Day Report





OSWEGO CITY SCHOOL DISTRICT

Redistricting Plan - Information



OSWEGO CITY SCHOOL DISTRICT

Redistricting Goals:

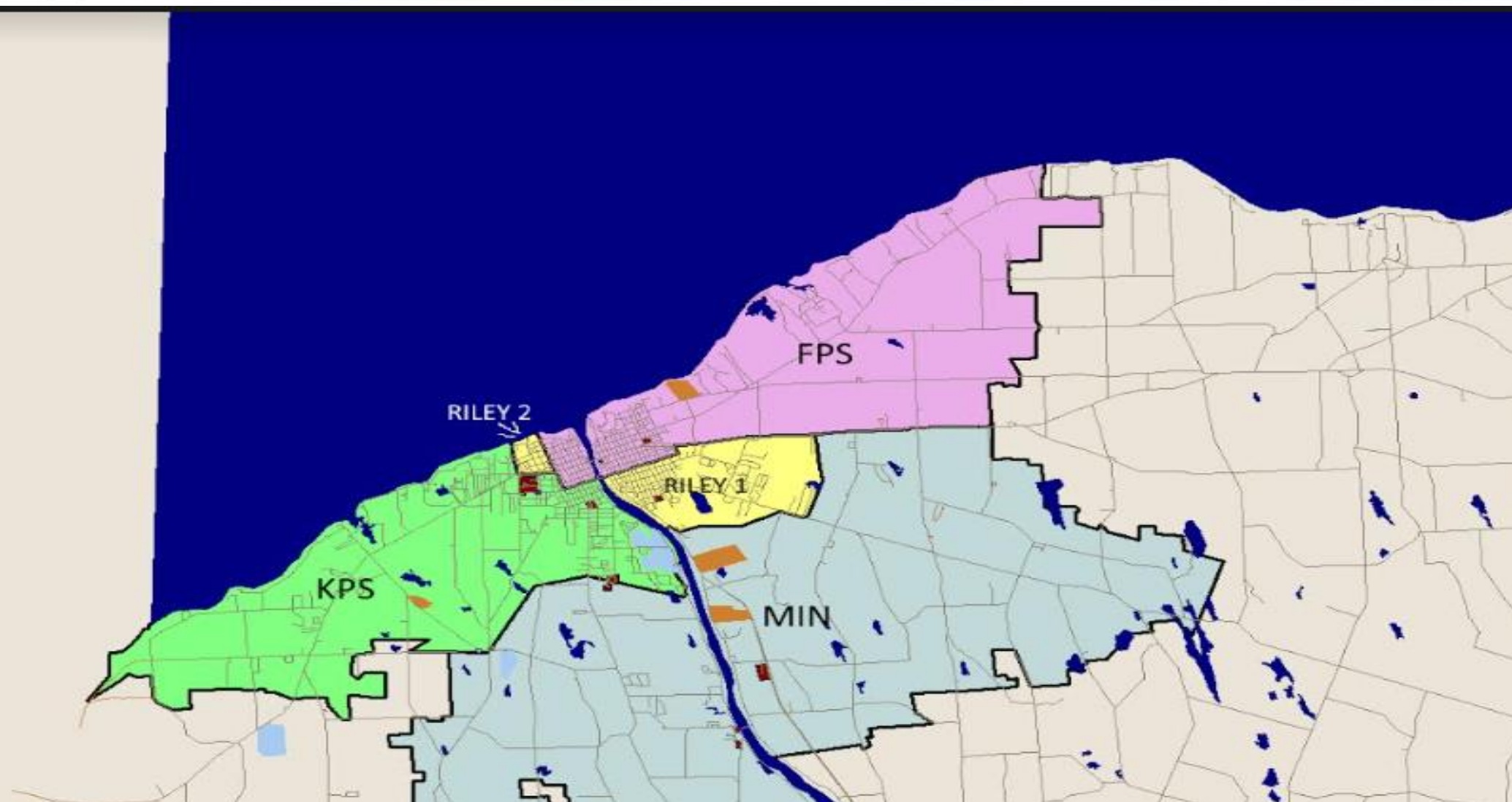
- Keep as many students possible in the current school that they attend
- Keep bus rides as short as possible
- Keep students who are receiving special permissions in the school that they currently attend

NOTE:

- There are only 32 students that are walkers who attend FLS
- The current average bus ride for FLS students is approximately 14 minutes



OSWEGO CITY SCHOOL DISTRICT

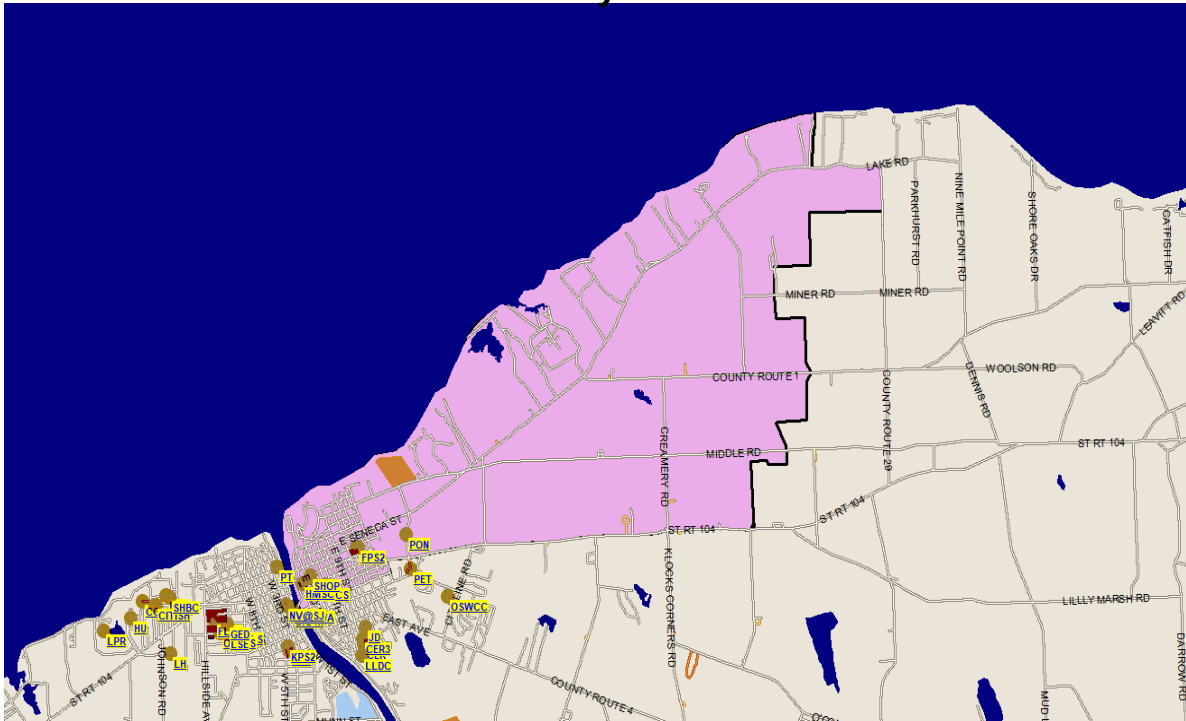




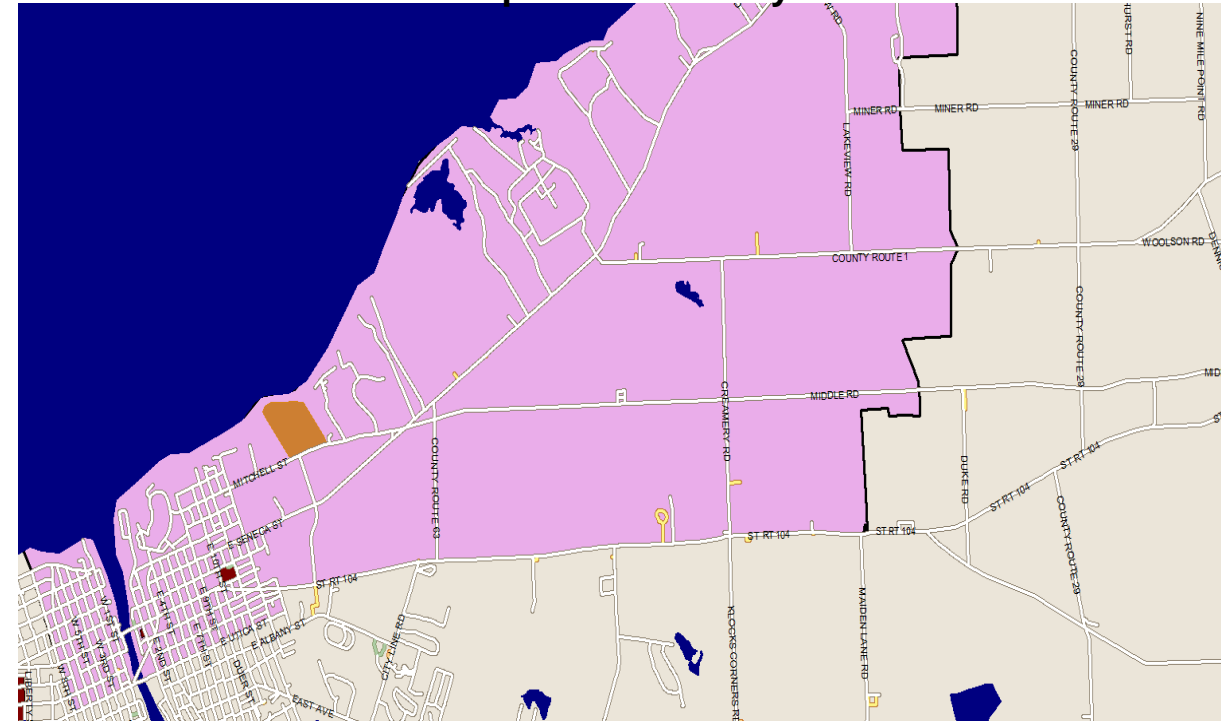
OSWEGO CITY SCHOOL DISTRICT

Fitzhugh Park School Boundary

Present boundary



Proposed boundary



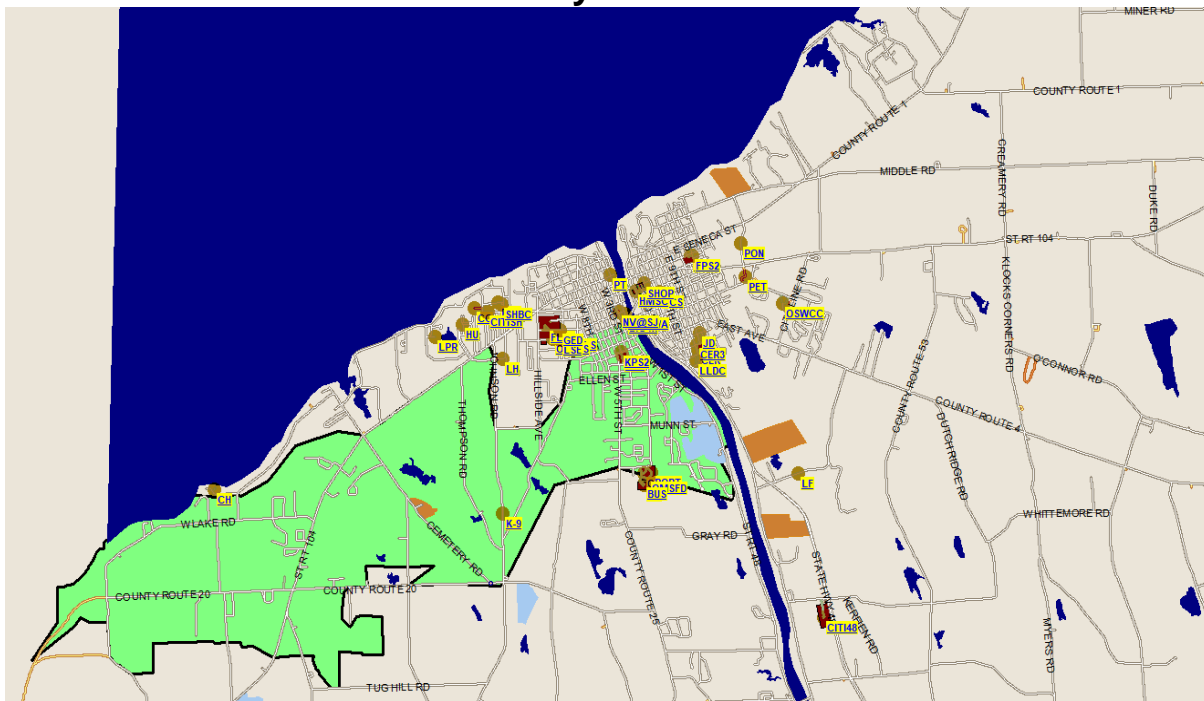
- Proposed boundary changes- The North, South, & East boundaries remain the same
- The West boundary would extend to include West 8th St. from Utica St. to the lake
- The average ride time for students attending FPS is between 19-24 minutes



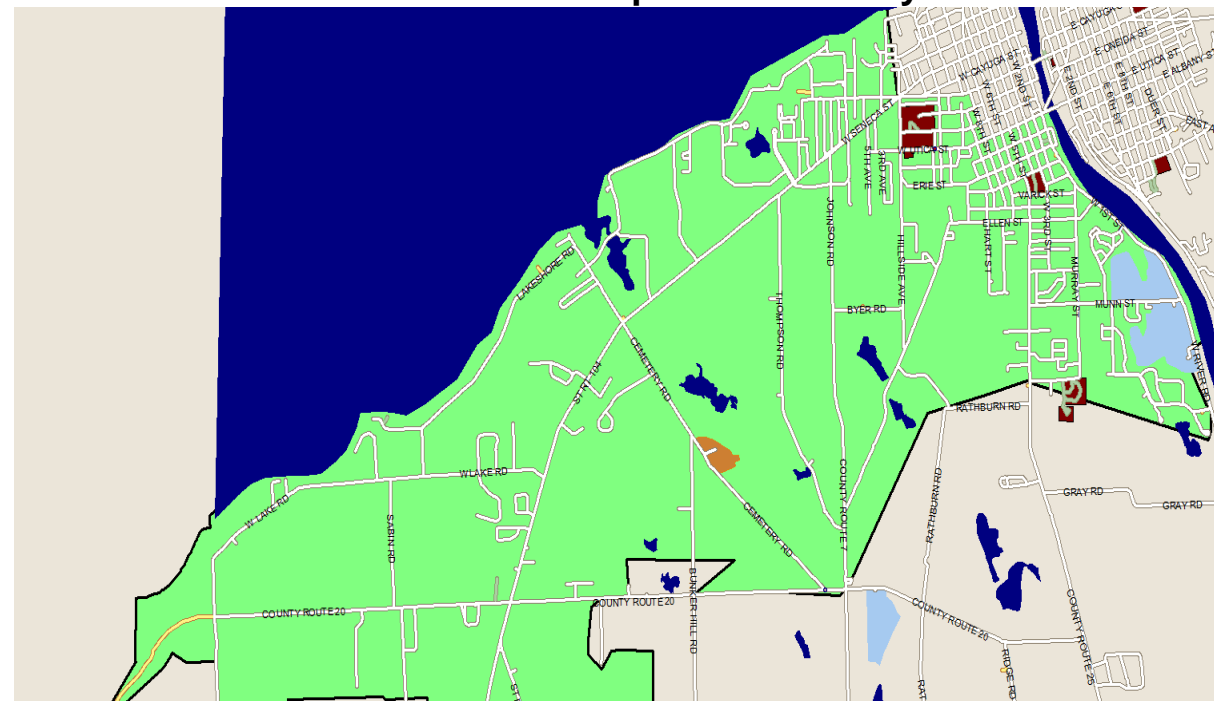
OSWEGO CITY SCHOOL DISTRICT

Kingsford Park School Boundary

Present boundary



Proposed boundary



- **Proposed boundary changes- The South & West boundaries remain the same.**
- **The North boundary would extend to include the lake from State Route 104**
- **The East boundary extends to 1st Ave from Seneca St. (North) and from Bridge St to W. 8th St**
- **The average ride time for students attending KPS is between 16-21 minutes**

[illegible]

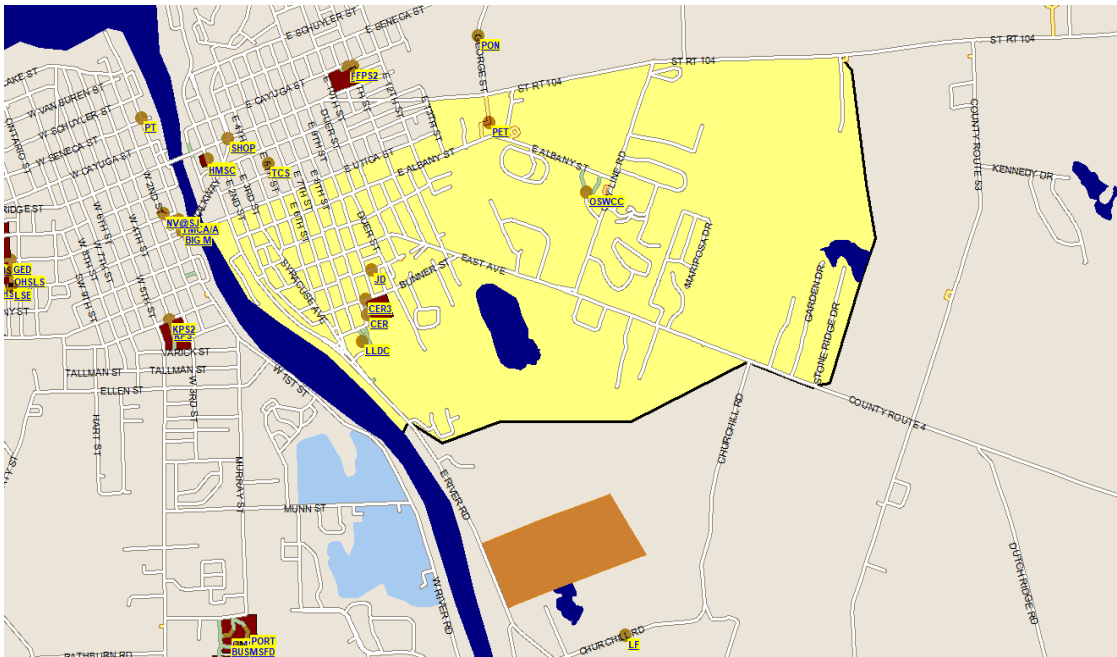
- **Minetto school boundary would remained unchanged**



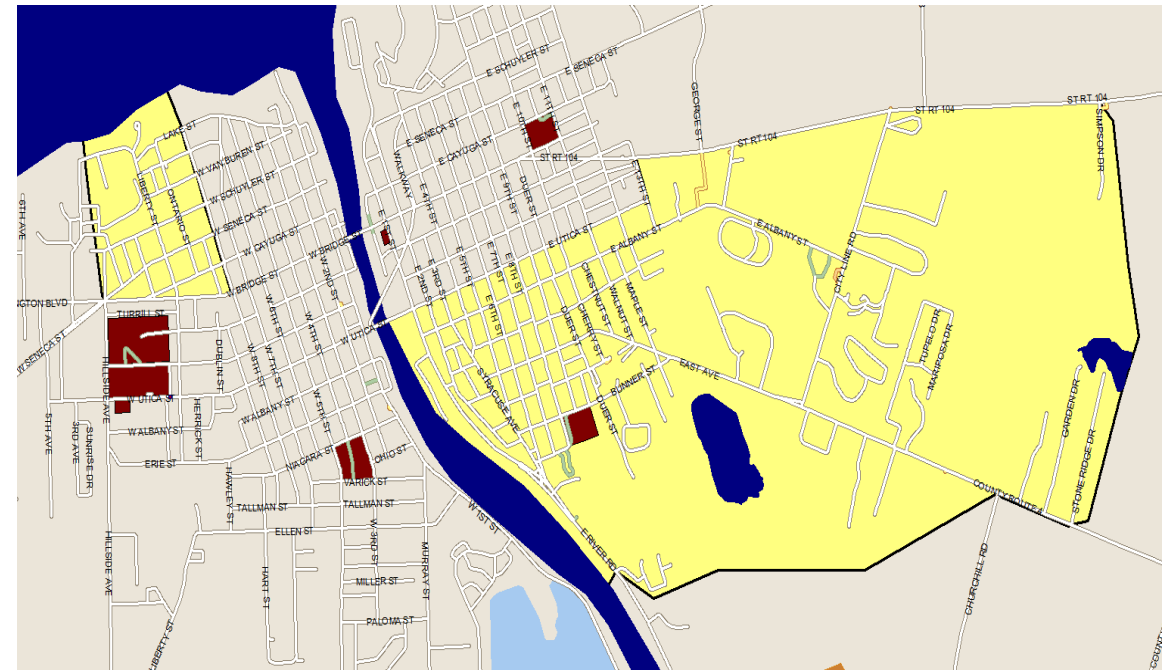
OSWEGO CITY SCHOOL DISTRICT

Riley School Boundary

Present boundary



Proposed boundary



- Riley's current boundary would remain the same
- We would add a small area on the Westside
- It would include from W 8th St. to 1st Ave. & Bridge St north to the lake
- This area is only .25 sq. mile but close to 100 students live within this boundary
- The average bus time for these students attending Riley would be 17-20 minutes





OSWEGO CITY SCHOOL DISTRICT

Student Enrollment Data – Information (Part 2)



OSWEGO CITY SCHOOL DISTRICT

September 2022 Enrollment

Building	UPK AM	UPK PM	UPK Full	Grade K	Grade 1	Grade 2	Grade 3	Grade 4	Grade 5	Grade 6	Grade 7	Grade 8	Grade 9	Grade 10	Grade 11	Grade 12	Totals By Building w/UPK	Totals By Building w/o UPK
CER	18	11		45	66	48	46	55	55	63							407	378
FPS	13	6		46	65	57	52	47	50	53							389	370
FLS			16	31	45	36	40	42	48	47							305	289
KPS	15	18		52	63	53	68	65	57	69							460	427
MIN	18	10		42	59	56	53	63	51	65							417	389
OMS											258	310					568	568
OHS													283	263	274	273	1093	1093
Total by Grade	64	45	16	216	298	250	259	272	261	297	258	310	283	263	274	273	3639	3514
	125			1853							568		1093					

Homeschooled Students....200
 Non-Public School Students...157
 Out of District Students.....60
 Pre-School Students (CPSE)...53



OSWEGO CITY SCHOOL DISTRICT

Student Enrollment as of October 17, 2022

Building	UPK AM	UPK PM	UPK Full	Grade K	Grade 1	Grade 2	Grade 3	Grade 4	Grade 5	Grade 6	Grade 7	Grade 8	Grade 9	Grade 10	Grade 11	Grade 12	Totals By Building w/UPK	Totals By Building w/o UPK
CER	17	11	0	45	66	48	47	55	55	64							408	380
FPS	13	13	0	45	65	58	52	47	50	52							395	369
FLS	0	0	16	33	46	36	39	41	46	47							304	288
KPS	15	18	0	53	63	53	69	66	58	70							465	432
MIN	18	10	0	42	60	56	53	63	51	66							419	391
OMS											256	308					564	564
OHS													281	263	273	269	1086	1086
Total by Grade	63	52	16	218	300	251	260	272	260	299	256	308	281	263	273	269	3641	3510
	131			1860							564		1086					

Homeschooled Students....200

Non-Public School Students...157

Out of District Students.....60

Pre-School Students (CPSE)...53



OSWEGO CITY SCHOOL DISTRICT

Special Permissions



OSWEGO CITY SCHOOL DISTRICT

There are 93 student across the district who attend a school other than their home school on “special permission.”

Request to Transfer From	Request to Transfer From Destination	Request to Attend FLS Breakdown
Frederick Leighton School (17)	CER- 5	Students from CER- 6
	KPS- 7	Students from FPS- 0
	FPS- 3	Students from MIN- 3
	MIN- 2	Students from KPS- 2
	Total= 17	Total= 11

$\Delta = -6$



OSWEGO CITY SCHOOL DISTRICT

Request to Transfer From	Request to Transfer From Destination	Request to Attend CER Breakdown
Charles E Riley (27)	FLS- 6	Students from FLS- 5
	FPS- 12	Students from FPS- 6
	KPS- 4	Students from MIN- 7
	MIN- 5	Students from KPS- 8
	Total= 27	Total= 26

$\Delta = -1$



OSWEGO CITY SCHOOL DISTRICT

Request to Transfer From	Request to Transfer From Destination	Request to Attend FPS Breakdown
Fitzhugh Park (13)	CER- 6	Students from FLS- 3
	KPS- 6	Students from CER- 12
	FLS- 0	Students from MIN- 4
	MIN- 1	Students from KPS- 2
	Total= 13	Total= 21

$\Delta = +8$



OSWEGO CITY SCHOOL DISTRICT

Request to Transfer From	Request to Transfer From Destination	Request to Attend MIN Breakdown
Minetto (21)	CER- 7	Students from FLS- 2
	KPS- 7	Students from CER- 5
	FLS- 3	Students from FPS- 1
	FPS- 4	Students from KPS- 3
	Total= 21	Total= 11

$\Delta = -10$



OSWEGO CITY SCHOOL DISTRICT

Request to Transfer From	Request to Transfer From Destination	Request to Attend KPS Breakdown
Kingsford Park (15)	CER- 8	Students from FLS- 7
	MIN- 3	Students from CER- 4
	FLS- 2	Students from FPS- 6
	FPS- 2	Students from MIN- 7
	Total= 15	Total= 24

$\Delta = +9$



OSWEGO CITY SCHOOL DISTRICT

Elementary Class Sections & Sizes



OSWEGO CITY SCHOOL DISTRICT

Regional Class Size Data K-6

District	K	1	2	3	4	5	6
CENTRAL SQUARE	20	22	22	22	25 (NTE - A)	25 (NTE- A)	23.7
FULTON	23	23	21	21	22	21	24
ESM	20-22 (21)	20-22 (21)	20-22 (21)	20-22 (21)	20-22 (21)	20-22 (21)	23-25 (some classes at 30)
OSWEGO	Median=15 Average = 15	Median=18 Average = 19	Median=18 Average = 18	Median=19 Average = 19	Median=20 Average = 19	Median=18 Average = 19	Median=21 Average = 21
APW	23	17	22	18	20	19	17
PHOENIX	17	18	18	21	23	22	22
HANNIBAL	16	16	17	19	19	16	18
PULASKI	15	15	15	15	15	15	15
SANDY CREEK	15	15	15	15	15	22	15



OSWEGO CITY SCHOOL DISTRICT

September 2022 - 23 Elementary Class Sections & Class Size Data

Building	K	1	2	3	4	5	6	Total
CER	3 Sections 15, 15, 15	3 Section 22, 22, 22	3 Sections 16, 16, 16	3 Sections 15, 17, 14	3 Sections 18, 19, 18	3 Sections 18, 17, 20	3 Sections 21, 21, 18	Sections=21 Median=17
FPS	3 Sections 16, 17, 13	4 Sections 16, 17, 16, 16	3 Sections 20, 20, 17	3 Sections 18, 18, 16	3 Sections 18, 14, 15	3 Sections 16, 17, 17	3 Sections 18, 18, 17	Sections=22 Median=17
FLS	2 Sections 15, 16	2 Sections 23, 22	2 Sections 17, 19	2 Sections 20, 20	2 Sections 20, 22	2 Sections 24, 24	2 Sections 23, 24	Sections=14 Median=21
KPS	3 Sections 19, 17, 16	3 Sections 22, 21, 20	3 Sections 17, 18, 18	3 Sections 22, 23, 23	3 Sections 19, 23, 23	3 Sections 20, 19, 18	3 Sections 23, 22, 24	Sections=21 Median=20
MIN	3 Sections 14, 14, 14	4 Sections 16, 14, 16, 13	3 Sections 17, 20, 20	3 Sections 18, 19, 16	3 Sections 21, 21, 21	3 Sections 17, 17, 17	3 Sections 21, 22, 22	Sections=22 Median=17
Total Sections & Median Class Size	Sections=14 Median=15	Sections=16 Median=18	Sections=14 Median=18	Sections=14 Median=19	Sections=14 Median=20	Sections=14 Median=18	Sections=14 Median=21	Total Sections 100

Median Sections: Grades K-2=14, Grades 3-6=14
Median Class Size: Grades K-2=18, Grades 3-6=20



OSWEGO CITY SCHOOL DISTRICT

2023-2024 Elementary Class Sections Scenario 1

Class Size:

- Grade K = 18 students per section
- Grades 1-2 = 20 students per section
- Grades 3-6 = 23 students per section

Building	K	1	2	3	4	5	6	Total
CER	68 Students 4 Sections	55 Students 3 Sections	81 Students 4 Sections	54 Students 2 Sections	54 Students 2 Sections	78 Students 3 Sections	73 Students 3 Sections	463 Students 21 Sections
FPS	68 Students 4 Sections	58 Students 3 Sections	83 Students 4 Sections	66 Students 3 Sections	70 Students 3 Sections	59 Students 3 Sections	63 Students 3 Sections	467 Students 23 Sections
KPS	68 Students 4 Sections	67 Students 3 Sections	80 Students 4 Sections	72 Students 3 Sections	82 Students 4 Sections	72 Students 3 Sections	67 Students 3 Sections	508 Students 24 Sections
MIN	68 Students 4 Sections	41 Students 2 Sections	59 Students 3 Sections	58 Students 3 Sections	50 Students 2 Sections	60 Students 3 Sections	52 Students 2 Sections	388 Students 19 Sections
Total Sections	272 Students 16 Sections	221 Students 11 Sections	303 Students 15 Sections	250 Students 11 Sections	256 Students 11 Sections	269 Students 12 Sections	255 Students 11 Sections	1826 Students 87 Sections



OSWEGO CITY SCHOOL DISTRICT

2023-2024 Elementary Class Sections Scenario 2

Class Size:

- Grade K-2 = 18 students per section
- Grades 3-6 = 23 students per section

Building	K	1	2	3	4	5	6	Total
CER	68 Students 4 Sections	55 Students 3 Sections	81 Students 5 Sections	54 Students 2 Sections	54 Students 2 Sections	78 Students 3 Sections	73 Students 3 Sections	463 Students 22 Sections
FPS	68 Students 4 Sections	58 Students 3 Sections	83 Students 5 Sections	66 Students 3 Sections	70 Students 3 Sections	59 Students 3 Sections	63 Students 3 Sections	467 Students 24 Sections
KPS	68 Students 4 Sections	67 Students 4 Sections	80 Students 4 Sections	72 Students 3 Sections	82 Students 4 Sections	72 Students 3 Sections	67 Students 3 Sections	508 Students 25 Sections
MIN	68 Students 4 Sections	41 Students 2 Sections	59 Students 3 Sections	58 Students 3 Sections	50 Students 2 Sections	60 Students 3 Sections	52 Students 2 Sections	388 Students 19 Sections
Total Sections	272 Students 16 Sections	221 Students 12 Sections	303 Students 17 Sections	250 Students 11 Sections	256 Students 11 Sections	269 Students 12 Sections	255 Students 11 Sections	1826 Students 90 Sections



OSWEGO CITY SCHOOL DISTRICT

2023-2024 Elementary Class Sections Scenario 3

Class Size:

- Grades K-2 = 20 students per section
- Grades 3-6 = 23 students per section

Building	K	1	2	3	4	5	6	Total
CER	68 Students 3 Sections	55 Students 3 Sections	81 Students 4 Sections	54 Students 2 Sections	54 Students 2 Sections	78 Students 3 Sections	73 Students 3 Sections	463 Students 20 Sections
FPS	68 Students 3 Sections	58 Students 3 Sections	83 Students 4 Sections	66 Students 3 Sections	70 Students 3 Sections	59 Students 3 Sections	63 Students 3 Sections	467 Students 22 Sections
KPS	68 Students 3 Sections	67 Students 3 Sections	80 Students 4 Sections	72 Students 3 Sections	82 Students 4 Sections	72 Students 3 Sections	67 Students 3 Sections	508 Students 23 Sections
MIN	68 Students 3 Sections	41 Students 2 Sections	59 Students 3 Sections	58 Students 3 Sections	50 Students 2 Sections	60 Students 3 Sections	52 Students 2 Sections	388 Students 18 Sections
Total Sections	272 Students 12 Sections	221 Students 11 Sections	303 Students 15 Sections	250 Students 11 Sections	256 Students 11 Sections	269 Students 12 Sections	255 Students 11 Sections	1826 Students 83 Sections



OSWEGO CITY SCHOOL DISTRICT

2023-2024 Elementary Class Sections Scenario 4

Class Size:

- Grade K = 18 students per section
- Grades 1-6 = 20 students per section

Building	K	1	2	3	4	5	6	Total
CER	68 Students 4 Sections	55 Students 3 Sections	81 Students 4 Sections	54 Students 3 Sections	54 Students 3 Sections	78 Students 4 Sections	73 Students 4 Sections	463 Students 25 Sections
FPS	68 Students 4 Sections	58 Students 3 Sections	83 Students 4 Sections	66 Students 3 Sections	70 Students 4 Sections	59 Students 3 Sections	63 Students 3 Sections	467 Students 24 Sections
KPS	68 Students 4 Sections	67 Students 3 Sections	80 Students 4 Sections	72 Students 4 Sections	82 Students 4 Sections	72 Students 4 Sections	67 Students 3 Sections	508 Students 26 Sections
MIN	68 Students 4 Sections	41 Students 2 Sections	59 Students 3 Sections	58 Students 3 Sections	50 Students 3 Sections	60 Students 3 Sections	52 Students 3 Sections	388 Students 21 Sections
Total Sections	272 Students 16 Sections	221 Students 11 Sections	303 Students 15 Sections	250 Students 13 Sections	256 Students 14 Sections	269 Students 14 Sections	255 Students 13 Sections	1826 Students 96 Sections



OSWEGO CITY SCHOOL DISTRICT

Building Usage Information



OSWEGO CITY SCHOOL DISTRICT

Building Usage Information

Name of School	Current Sections	Space Available	Classrooms Available
KPS	21	27-29	6
FPS	22	27-29	5
FLS	14	19	5
MIN	22	32	10
CER	21	30	9
Total Classroom Spaces Available			35



OSWEGO CITY SCHOOL DISTRICT

QUESTIONS?

ANSWERS!



Repurposing Options for FLS

- Final decisions rest with the Board of Education
- Some ideas include but are not limited to:
 - Continue to utilize space for athletics, public meetings and offices
 - Relocation of all preschool programs to FLS
 - Use space for tutorial services
 - Program expansion – Alt Ed.
 - Professional development for staffing
 - Rent space to local service providers and/or educational organizations
 - Continue Leighton Learning Community – Partnership activities in building



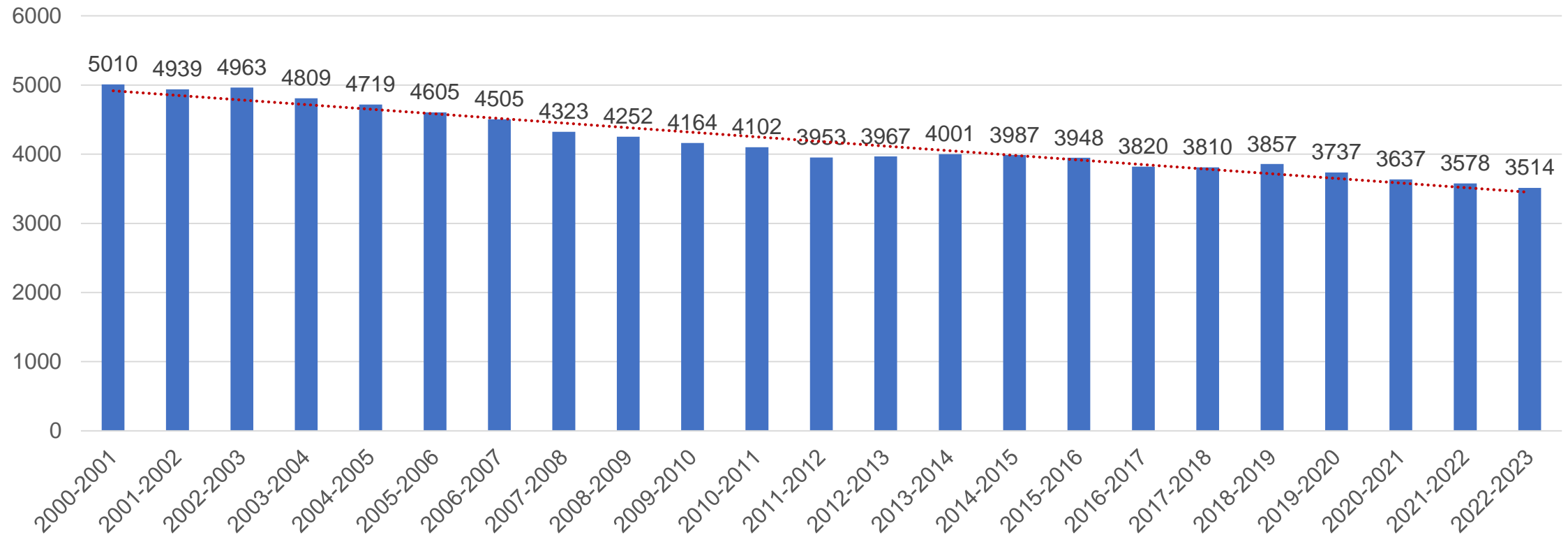
Thoughts for future consideration...

1. Student need continues to grow
2. There is a need to expand programming
3. Costs are continuing to escalate while enrollment is continuing to decline (from 5000 +++ -- now down to 3514)



OSWEGO CITY SCHOOL DISTRICT

2001-2023 School Year Student K-12 Enrollment Data
(Avg=68 Student Decline per Year)
Data from BEDS Day Report





OSWEGO CITY SCHOOL DISTRICT

Building Usage Information

Name of School	Current Sections	Space Available	Classrooms Available
KPS	21	27-29	6
FPS	22	27-29	5
FLS	14	19	5
MIN	22	32	10
CER	21	30	9
Total Classroom Spaces Available			35



OSWEGO CITY SCHOOL DISTRICT

Next Meeting:

- Community focus group outcomes report
- Building condition survey information



OSWEGO CITY SCHOOL DISTRICT

THANK YOU!