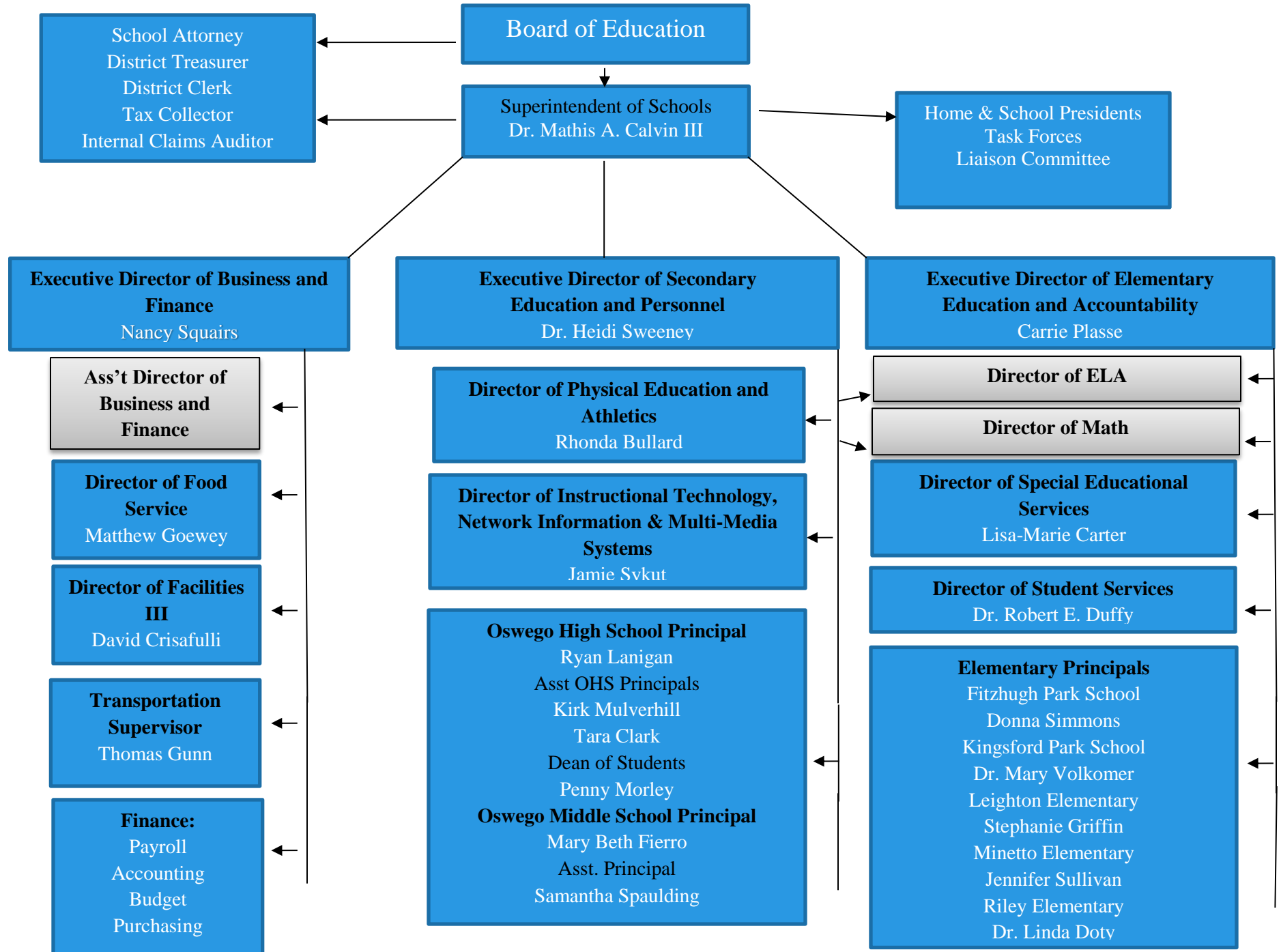


# OSWEGO CITY SCHOOL DISTRICT ORGANIZATIONAL CHART

(Board Approved: 12/7/2021 )



School Attorney  
District Treasurer  
District Clerk  
Tax Collector  
Internal Claims Auditor

Board of Education

Superintendent of Schools  
Dr. Mathis A. Calvin III

Home & School Presidents  
Task Forces  
Liaison Committee

**Executive Director of Business and Finance**  
Nancy Squairs

**Executive Director of Secondary Education and Personnel**  
Dr. Heidi Sweeney

**Executive Director of Elementary Education and Accountability**  
Carrie Plasse

**Ass't Director of Business and Finance**

**Director of Food Service**  
Matthew Goewey

**Director of Facilities III**  
David Crisafulli

**Transportation Supervisor**  
Thomas Gunn

**Finance:**  
Payroll  
Accounting  
Budget  
Purchasing

**Director of Physical Education and Athletics**  
Rhonda Bullard

**Director of Instructional Technology, Network Information & Multi-Media Systems**  
Jamie Svkut

**Oswego High School Principal**  
Ryan Lanigan  
Asst OHS Principals  
Kirk Mulverhill  
Tara Clark  
Dean of Students  
Penny Morley  
**Oswego Middle School Principal**  
Mary Beth Fierro  
Asst. Principal  
Samantha Spaulding

**Director of ELA**

**Director of Math**

**Director of Special Educational Services**  
Lisa-Marie Carter

**Director of Student Services**  
Dr. Robert E. Duffy

**Elementary Principals**  
Fitzhugh Park School  
Donna Simmons  
Kingsford Park School  
Dr. Mary Volkomer  
Leighton Elementary  
Stephanie Griffin  
Minetto Elementary  
Jennifer Sullivan  
Riley Elementary  
Dr. Linda Doty